

5724BK Spring Clamp & Liner Kit

Tools:

2 heavy C-clamps 4" or larger
wooden dowels or blocks
hammer
measuring tape
marker (optional)

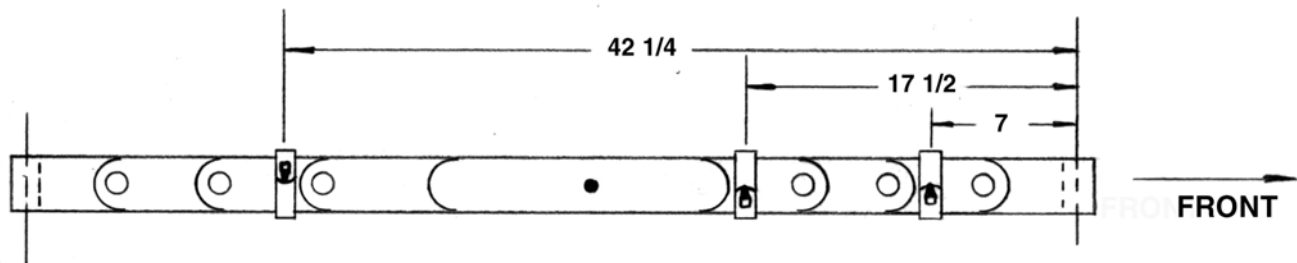
Procedure:

Measuring from the center of the front bolt hole of the spring make marks on the bottom side of the spring at 7", 17 1/2", and 42 1/4". Clamps should be approximately centered on these marks. Clamp size is determined by length of the sides since they clamp a different number of spring leaves. The small clamp goes over two leaves while the medium clamp goes over three leaves and the large over four.

Center a liner on the large clamp and slide clamp into position 17 1/2" mark. You may have to start the clamp near the end of the spring and then slide it into place.

Authenticity Hint

All of the original springs we have at CASCO have had the clamps installed in the following orientation. Functionally there is no difference in which way they are installed.



The liner should be on top of the spring and the clamp assembly should be centered on the 17 1/2" mark. C-clamp the assembly to the leaf spring by passing the threaded end of the C-clamp between the ends of the band clamp. You may need to unbend the ends of the band clamp in order to get the C-clamp in place. The other end of the C-clamp should be on top of the assembly squeezing the liner between the band clamp and the spring. After tightening the C-clamp, put the second C-clamp on the sides of the band clamp squeezing it against the sides of the leaves. Remove the first C-clamp. The band clamp assembly should not move when you remove the first clamp. If it does, remove the remaining clamp and start over squeezing the liner as above and continue.

Once you have the band clamp assembly in place and held only by the sides, bend the end with out the hole over flat using wood and a hammer. Be careful not to flatten the little tab while doing this. Bending can be done, of course, without using wood but hammering the clamp directly will leave marks in the steel. Using wood and hammer again, bend the end with the hole over flat. The little tab should pass through the hole. Once the ends are bent over flat, Bend the little tab over securely. Repeat procedure for the small and medium clamps.